



*'changing lives, creating opportunities'*

# Introduction to Community Foundation



# ABOUT COMMUNITY FOUNDATION

Community Foundation is a grassroots charity, supporting people in inner city areas to change their lives, by improving their conditions and creating opportunities for people to reach their full potential.

## **Our Mission:**

- ▶ Improve the quality of life of communities living in areas of multiple deprivation.

## **Our Approach:**

- ▶ Set up initiatives and programmes to develop communities to help themselves.

## **Our Philosophy:**

- ▶ Give a person a fish and they will eat for a day. Teach them how to fish and they will eat for a lifetime.

## **Our Work Streams**

- ▶ develop projects and services to address underlying issues of homelessness, social exclusion/isolation, health inequality, unemployment and under achievement.
- ▶ encourage civic participation & provide education and training to build capacity of individuals and organisations to improve themselves, their organisation and their community.
- ▶ develop targeted provisions to improve community safety, prevent anti social behaviour, domestic violence, drug/alcohol abuse and improve community cohesion and tolerance.
- ▶ Provide a range of social, education and recreational services for adults and young people.

## **Our Values**

Community Foundation management, staff and volunteers are united by a common set of values, which are:

- ▶ **Community Outreach:** We engage with our communities. We do not work in isolation. We practice our problem-solving abilities, share our knowledge, and give of our time and resources to make concrete positive contributions to our communities.
- ▶ **Empowerment:** We choose to empower. Instead of simply providing resources, our work focuses on developing in individuals the capacity and confidence they need to change their own situations and assist their communities.
- ▶ **Cooperation & Partnership:** We value the opportunity to work together on common goals and toward a common purpose. We recognise and value the strengths and expertise of others and seek to work with them to improve outcomes for all in our community.
- ▶ **Achievement:** We value and recognise when people accomplish something they have set out to do through their skills, practice, perseverance or exertion. We value completing what we set out to do, adding value to and making a tangible difference to our community and work.
- ▶ **Creativity:** We value dreaming of what's possible! We value and look for innovative and different ways to do our work more effectively. We value imagination, experimentation, and fun in serving our community.



# OUR KEY SERVICES AND ACTIVITIES



- Apprenticeship Programme
- Traineeship Scheme
- Work Experience
- College Placement
- Graduate Internship Scheme
- Voluntary Work Programme
- Employment Workshop
- Digital Training
- Rainbow Day Nursery
- Life Skills English Programme
- Job Club
- Suited and Booted
- Social Enterprise Programme
- Community Economic Development



- Pride in our Neighbourhood
- Community Question Time
- Neighbourhood Watch Scheme
- Canal Adoption Scheme
- Community Awareness Workshops
- Befriending Scheme
- DBS Check Service
- Picnic in the Park
- Community Needs Survey
- Know your Neighbour
- Medina Food Bank
- Healthy Living
- Health Inequalities



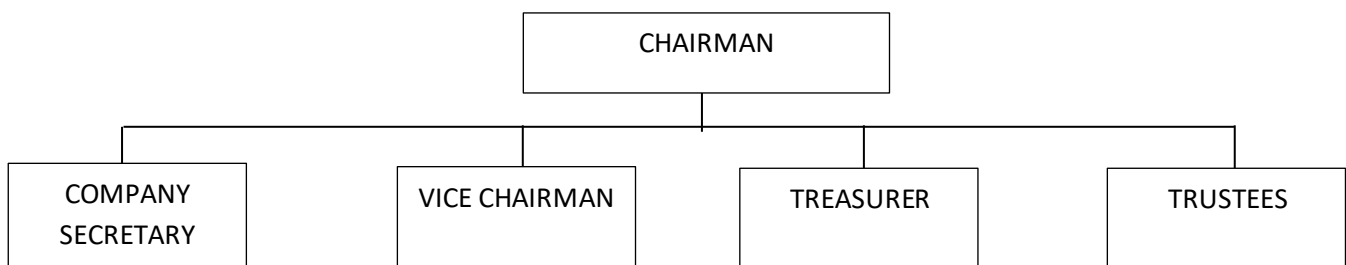
- Community Inspiration Awards
- Organisational Development
- Youth Leadership Scheme
- Youth Connections
- Muslim Third Sector Support
- Youth Residential / Camp
- Family Day Trips
- Deen Academy
- Kids Sports Day in the Park
- Youth Holiday Scheme
- Youth Mentoring Scheme

# OUR GOVERNANCE AND MANAGEMENT

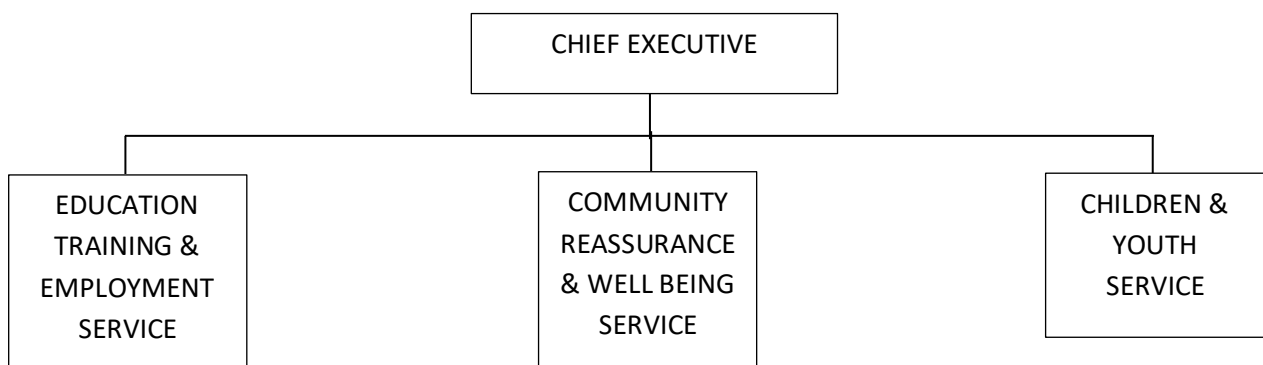
Community Foundation is governed by a Memorandum and Articles of Association.

- We are registered as a company limited by guarantee in England, Registration Number 7199617.
- We are registered with the Charity Commission as a non-profit charity, Registration Number 1155455.
- We are registered with Ofsted for the Compulsory and Voluntary part of the Child Care Register, Registration Number EY486400
- We are registered with Department for Education, DfE Unique Reference Number 613732
- We are registered with the Food Standards Agency for the Food Premises Registration Regulation EC 852/2004
- We are on the Register of Training Organisation (ROTO), UK Provider Reference Number (UKPRN) 10041870

## Our Governance Structure



## Our Management Structure



## Community Foundation

Head Office: Quayside Tower, 15<sup>th</sup> Floor, 252 – 260 Broad Street, B1 2HF

Lozells Centre: 20 St Silas Square, Lozells, Birmingham, B19 1QW

T: 0121 312 0135

M: 0791 854 6577

E: [info@thecommunityfoundation.org.uk](mailto:info@thecommunityfoundation.org.uk)

W: [www.thecommunityfoundation.org.uk](http://www.thecommunityfoundation.org.uk)

Company Registration No. 7199617

Charity Registration No. 1155455

Ofsted Registration No. EY486440

DfE URN No. 613732

UK Register of Learning Providers (UKRLP) No. 10041870

